

RETAIL AND OFFICE
SPACE FOR LEASE

HISTORIC JUNCTION BUILDING



402 SANTA FE
LA JUNTA, COLORADO 81050

FEATURES

Great office space for lease.

Located within close proximity to the County Courthouse.

Great lease rates with utilities and janitorial included.

Short term leases available.

DEMOGRAPHICS (2022)



POPULATION

1 MILE:	5,699
3 MILES:	8,479
5 MILES:	9,134



HOUSEHOLDS

1 MIILE:	2,318
3 MILES:	3,459
5 MILES:	3,718



**HOUSEHOLD
INCOME
(MEDIAN)**

1 MIILE:	\$38,080
3 MILES:	\$39,637
5 MILES:	\$40,894

LEASING INFORMATION

ASKING RATES

Call for details.

2022 EST. NNN

N/A

TERMS

3-5 year leases.

MAXIMUM CONTIGUOUS

3,770 sq.ft.

MINIMUM SF

471 sq.ft.

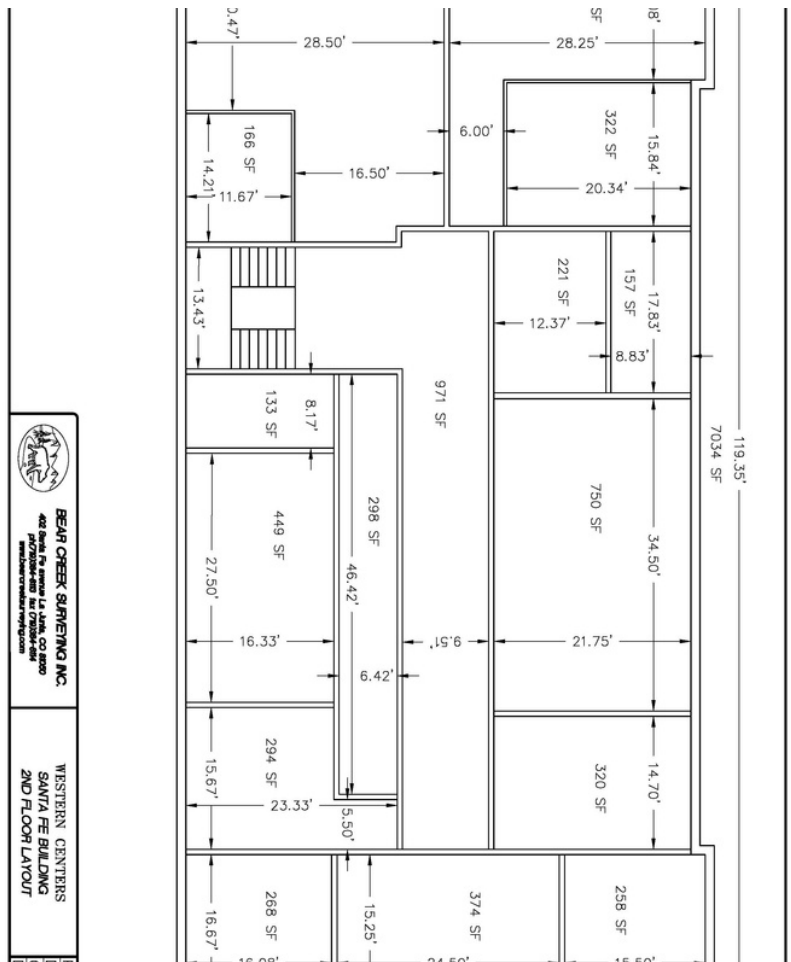
RETAIL AND OFFICE SPACE FOR LEASE

HISTORIC JUNCTION BUILDING



SUITE	TENANT	SQ. FT.
100	Public Defender Office	6,659
200	AVAILABLE	702
201	AVAILABLE	400
202	AVAILABLE	675
203	AVAILABLE	471
204	AVAILABLE	1,200
206	AVAILABLE	322
207	Percheron	628
208	AVAILABLE	1,200

SITE MAP



EXPLORE MORE WESTERN CENTERS
LEASING OPPORTUNITIES



WESTERN CENTERS
10555 E. DARTMOUTH AVE. SUITE 360
AURORA, CO 80014



303.306.1000
LEASING@WESTERNCENTERS.COM
WWW.WESTERNCENTERS.COM